

FLOOR PLAN 1/4"=1'-0"

FLOOR PLAN SQ FT = 1459

2X6 STUDS @ 16" OC AT ALL EXTERIOR WALLS UNLESS OTHERWISE NOTED

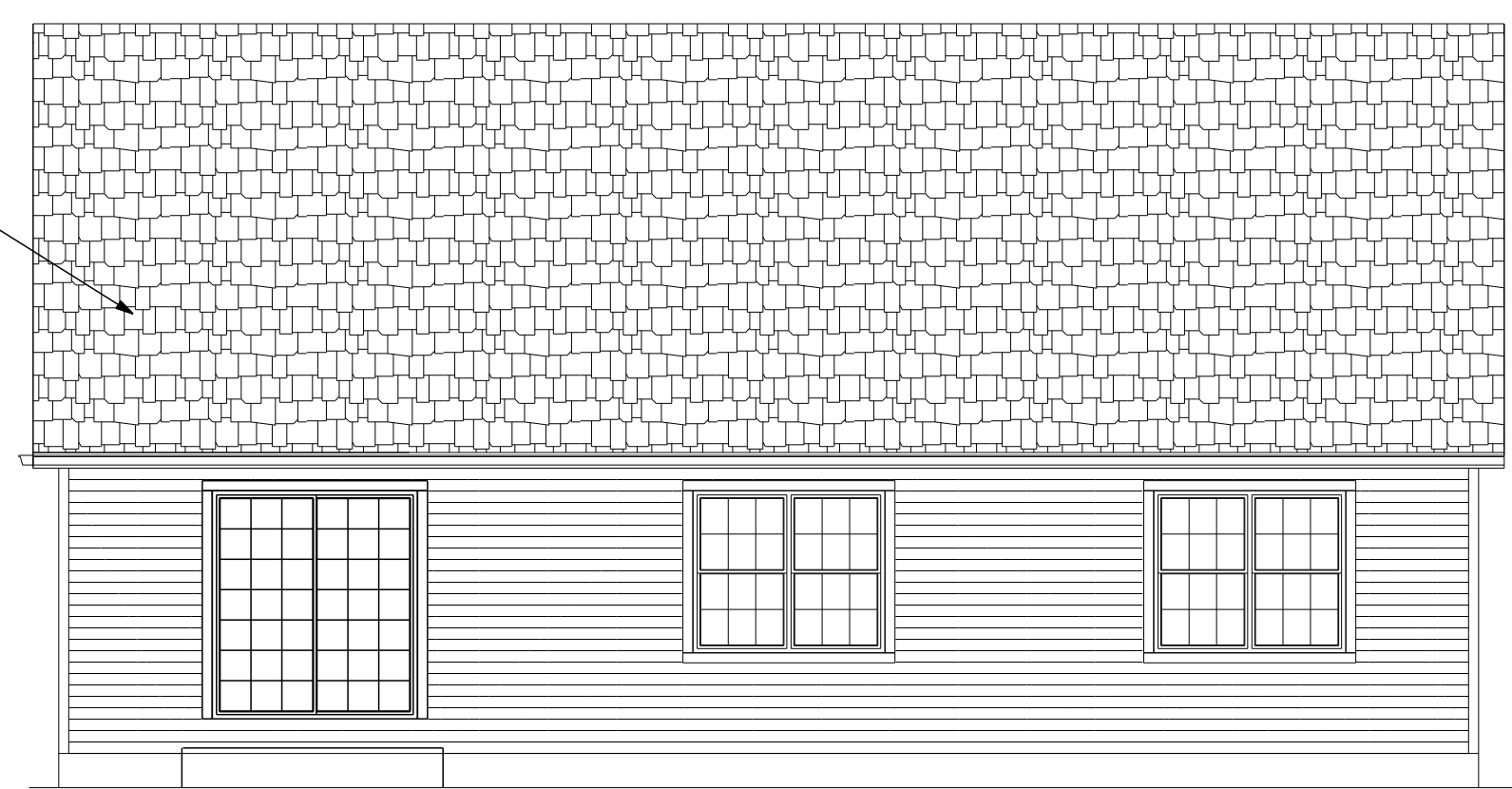
■ = POINT LOAD FROM ABOVE
 PROVIDE THE FOLLOWING:
 1) SOLID BLOCKING BETWEEN BEAM (OR SILL) AND FLYWOOD SUBFLOOR
 2) A MINIMUM OF THREE STUDS IN A BEARING WALL AS BEAM JACKS

WINDOW SCHEDULE						
TYPICAL HEADERS: (2) 2" X 10" TYPICAL HEADER HEIGHT: 6'-10"						
(EXCEPTIONS ARE NOTED ON PLANS)						
NOTE: ALL LUMBER SPECIES FOR HEADERS, JOISTS, AND BEAMS TO BE KD BRIDGE NO. 1 OR BETTER.						
ALL LOADS FOR FLOOR JOISTS, RAFTERS, BEAMS AND BEAMS ARE BASED ON THE FOLLOWING:						
FLOOR JOISTS LIVING AREAS: 40 PSF LIVE LOAD 20 PSF DEAD LOAD						
FLOOR JOISTS SLEEPING AREAS: 50 PSF LIVE LOAD 20 PSF DEAD LOAD						
MANUFACTURER (OR EQUIVALENT): HARVEY WINDOWS MIN. U-FACTOR .35						
UNIT	ROUGH OPENING	TYPE	QTY	AREA / SILL EFF	NET AREA	DESIGN PRESSURE
A	2'-10" X 4'-9 1/2"	DH	2	8.0 / 2.1"	8.03	30
B	5'-6 1/4" X 4'-9 1/2"	DH MFL	3	28.0 / 2.1" EA	8.03 EA	30
C	2'-10" X 3'-9 1/2"	DH	3	9.9 / 3.9"	3.31	30
D						
E						
F						
G						

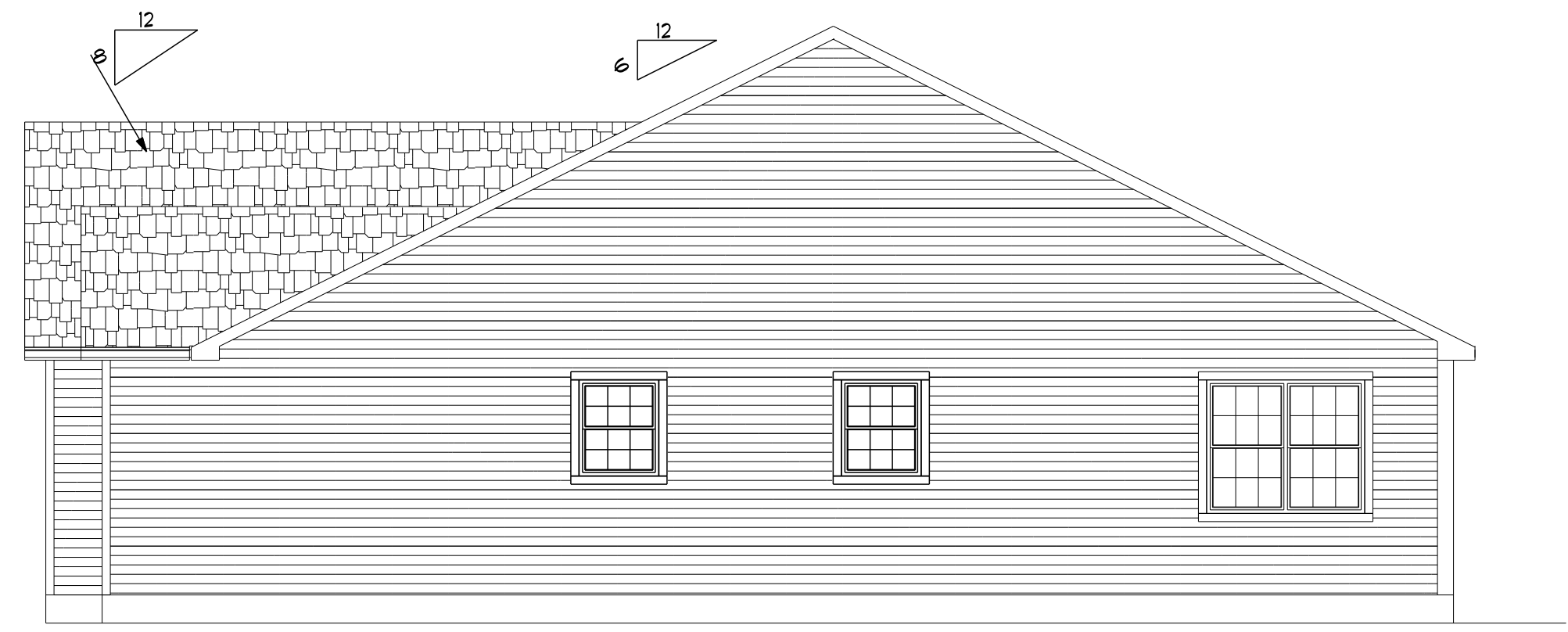
DOOR SCHEDULE		
TYPICAL HEADERS: (2) 2" X 10" TYPICAL HEADER HEIGHT: 6'-10"		
(EXCEPTIONS ARE NOTED ON PLANS)		
INTERIOR AND EXTERIOR DOOR SIZES ARE NOTED ON PLANS.		
INTERIOR DOORS: 6'-10" HIGH (TYPICAL)		
EXTERIOR DOORS: 6'-10" HIGH (TYPICAL)		
DESIGN PRESSURE		DESIGN PRESSURE PROVIDED
WIND ZONE: 100 MPH WIND EXPOSURE: B HEIGHT (AVERAGES): 29'-0" PRESSURE ZONE: 4 & 5		8.0 / -8.5 30



FRONT ELEVATION 1/4"=1'-0"



BACK ELEVATION 3/16"=1'-0"



RIGHT SIDE ELEVATION 3/16"=1'-0"



LEFT SIDE ELEVATION 3/16"=1'-0"

THESE DRAWINGS ARE IN ACCORDANCE WITH THE FOLLOWING DESIGN CRITERIA.

1. RISBC - 2 - 2013
2. WIND DESIGN: ZONE 1 (100 MPH)
3. LOAD DESIGN: 40 PSF LIVING AREA LOADS
30 PSF SLEEPING AREA LOADS
20 PSF DEAD LOADS
20 PSF ATTIC LOADS
60 PSF EXTERIOR DECK LOADS
30 PSF SNOW LOADS
4. FROST DEPTH: MINIMUM 3'-6" DEEP
5. CLIMATE ZONE: 5A
6. CONSTRUCTION TYPE: B5
7. OCCUPANCY TYPE: R3
8. BUILDING HEIGHT: (MAXIMUM 35'-0") MEASURED FROM TOP OF FOUNDATION TO RIDGE
9. ALL INSULATION IN EXTERIOR WALLS ARE BASED ON THE MINIMUMS AS PER THE PRESCRIPTIVE METHOD OF TABLE N102.1.2 OF THE ENERGY CONSERVATION CODES.

CUSTOM RANCH
 PREPARED FOR:
 KENTCO DEVELOPMENT
 CEDAR RIDGE
 WEST GREENWICH, RI

DLR DIMENSIONS, INC.
 RESIDENTIAL DESIGNERS
 612 GREENWICH AVENUE
 WARWICK, RHODE ISLAND 02886
 PHONE (401) 938-3156
 EMAIL: DLRDIMENSIONS@gmail.com

DLR DIMENSIONS, INC. IS NOT LIABLE FOR ANY CHANGES, OMISSIONS, AND/OR DRAWINGS, BUILDING CONTRACTOR SHALL VERIFY ALL DIMENSIONS AND INSURE COMPLIANCE WITH LOCAL ORDINANCES DURING CONSTRUCTION.

SCALE
 NOTED
 DATE
 Tuesday, January 12, 2016
 APPROVED
 DRR
 DRAWN BY
 DRR
 DRAWING NUMBER
 4534

