

FLOOR PLAN 1/4"=1'-0"

■ • POINT LOAD FROM ABOVE
PROVIDE THE FOLLOWING:
1) SOLID BLOCKING BETWEEN BEAM (OR BILL) AND PLYWOOD SUBFLOOR
2) A MINIMUM OF THREE STUDS IN A BEARING WALL AS BEAM JACKS

WINDOW SCHEDULE						
TYPICAL HEADERS (2" X 10") TYPICAL HEADER HEIGHT = 6'-10"						
(EXCEPTIONS ARE NOTED ON PLANS)						
NOTE: ALL LUMBER SPECIES FOR HEADERS, JOISTS, AND BEAMS TO BE KD SPRUCE NO. 2 OR BETTER.						
ALL LOADS FOR FLOOR JOISTS, RAFTERS, HEADERS AND BEAMS ARE BASED ON THE FOLLOWING:						
FLOOR JOISTS LIVING AREAS: 40 PSF LIVE LOAD 20 PSF DEAD LOAD						
FLOOR JOISTS SLEEPING AREAS: 30 PSF LIVE LOAD 20 PSF DEAD LOAD						
MANUFACTURER (OR EQUIVALENT): HARVEY WINDOWS MIN. U-FACTOR .35						
UNIT	ROUGH OPENING	TYPE	QTY	AREA / BILL FFF	NET AREA	DESIGN PRESSURE
A	2'-10" X 4'-8 1/2"	DH	3	9.0 / 2.1"	9.03	30
B	2'-10" X 4'-8 1/2"	DH MSL	2	28.0 / 2.1" EA	9.03 EA	30
C	2'-10" X 3'-8 1/2"	DH	1	9.9 / 3'-8"	3.31	30
D						
E						
F						
G						
DOOR SCHEDULE						
TYPICAL HEADERS (2" X 10") TYPICAL HEADER HEIGHT = 6'-10"						
(EXCEPTIONS ARE NOTED ON PLANS)						
INTERIOR AND EXTERIOR DOOR SIZES ARE NOTED ON PLANS.						
INTERIOR DOORS: 6'-10" HIGH (TYPICAL)						
EXTERIOR DOORS: 6'-10" HIGH (TYPICAL)						
DESIGN PRESSURE						DESIGN PRESSURE REQUIRED
WIND ZONE: 100 MPH WIND EXPOSURE: B HEIGHT (AVERAGE): 25'-0" PRESSURE ZONES: 4 & 5						
						30

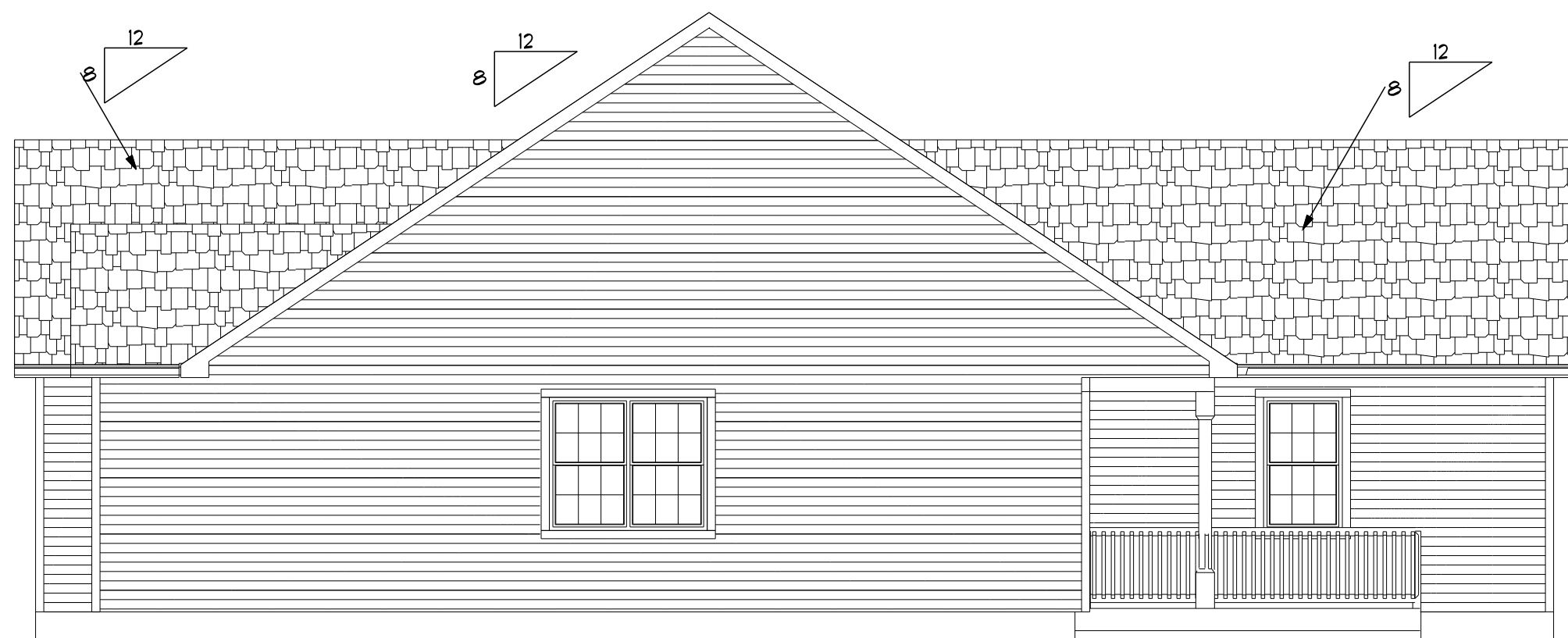
2X6 STUDS @ 16" OC
AT ALL EXTERIOR WALLS
UNLESS OTHERWISE NOTED



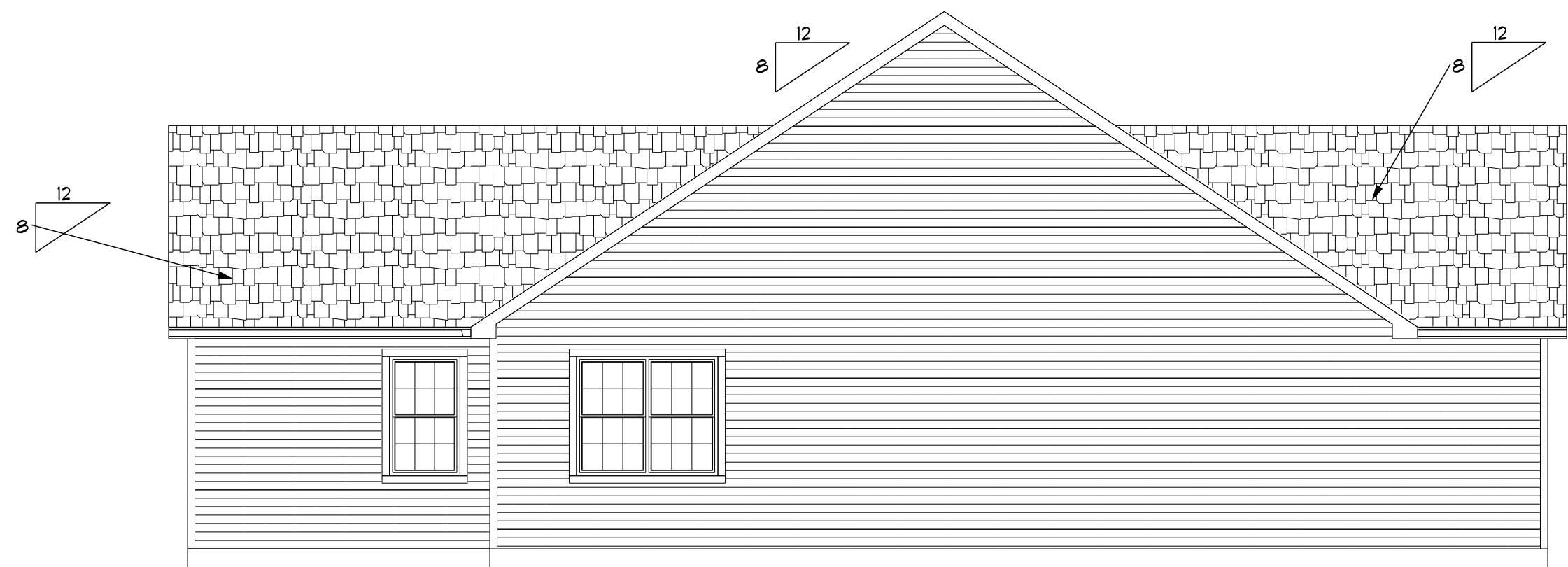
FRONT ELEVATION 1/4"=1'-0"



BACK ELEVATION 3/16"=1'-0"



RIGHT SIDE ELEVATION 3/16"=1'-0"



LEFT SIDE ELEVATION 3/16"=1'-0"

THESE DRAWINGS ARE IN ACCORDANCE WITH THE FOLLOWING DESIGN CRITERIA.

- RISBC - 2 - 2013
- WIND DESIGN: ZONE 1 (100 MPH)
- LOAD DESIGN: 40 PSF LIVING AREA LOADS
30 PSF SLEEPING AREA LOADS
20 PSF DEAD LOADS
20 PSF ATTIC LOADS
60 PSF EXTERIOR DECK LOADS
30 PSF SNOW LOADS
- FROST DEPTH: MINIMUM 3'-6" DEEP
- CLIMATE ZONE: 5A
- CONSTRUCTION TYPE: 5B
- OCCUPANCY TYPE: R3
- BUILDING HEIGHT: (MAXIMUM 35'-0")
MEASURED FROM TOP OF FOUNDATION TO RIDGE
- ALL INSULATION IN EXTERIOR WALLS ARE BASED ON THE MINIMUM AS PER THE PRESCRIPTIVE METHOD OF TABLE N102.1.2 OF THE ENERGY CONSERVATION CODES.

CUSTOM RANCH
PREPARED FOR:
KENTCO DEVELOPMENT
CEDAR RIDGE
WEST GREENWICH, RI

DLR DIMENSIONS, INC.
RESIDENTIAL DESIGNERS
612 GREENWICH AVENUE
WARWICK, RHODE ISLAND 02886
PHONE (401) 793-3156
EMAIL: DLRDIMENSIONS@gmail.com

DLR DIMENSIONS, INC.
IS NOT LIABLE FOR
BUTLER
CHANGES, NOTES,
AND/OR DRAWINGS,
BUILDER/CONTRACTOR
ALL DIMENSIONS AND
INSURE COMPLIANCE WITH
LOCAL CODES
FOR CONSTRUCTION.

SCALE
NOTED
DATE
Friday, July 10, 2015
APPROVED
DRR
DRAWN BY
DRR
DRAWING NUMBER
4153